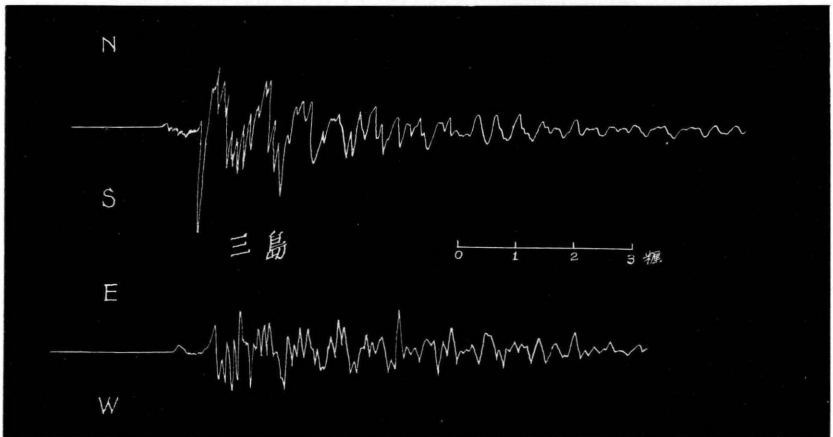
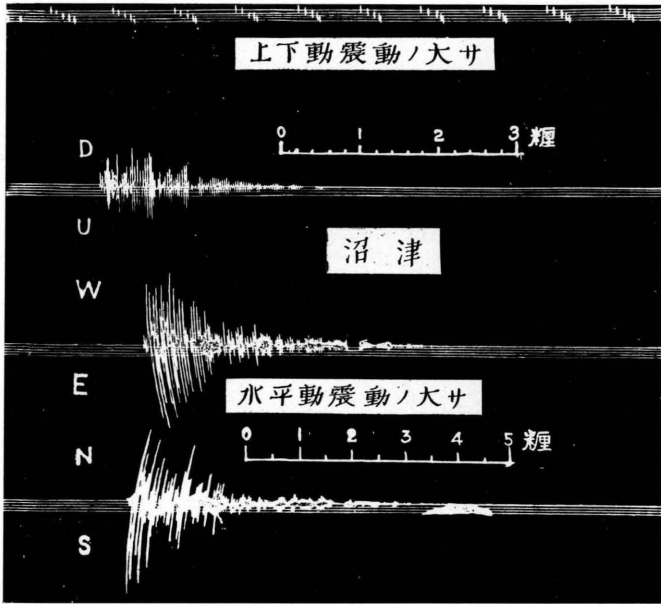
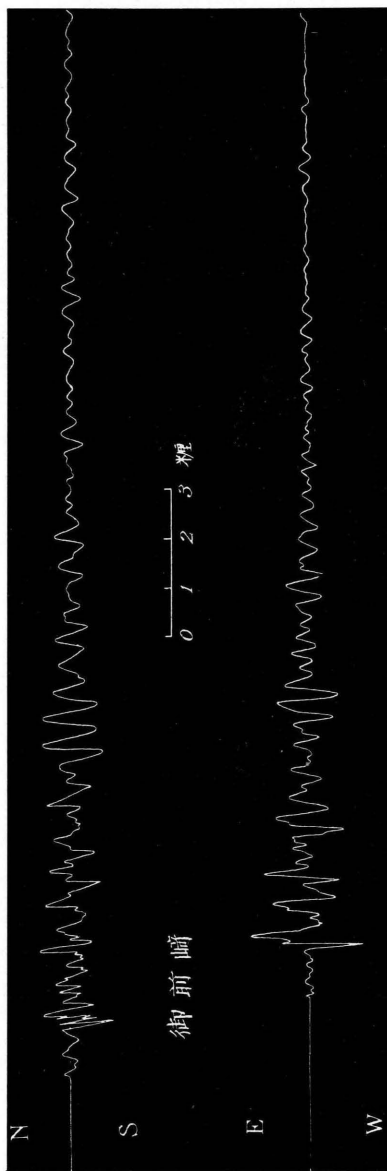
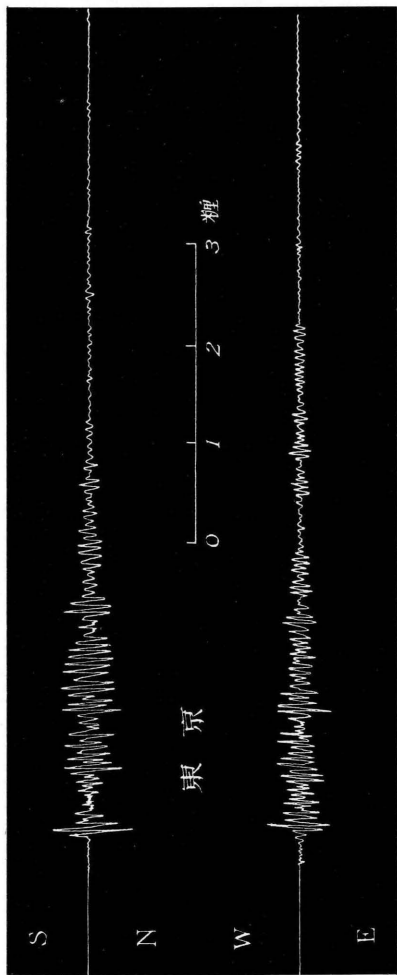


静岡強震地震計記象(1)



(三島の記象上で1分の長さ約54釐)

静岡強震地震災計記象 (2)

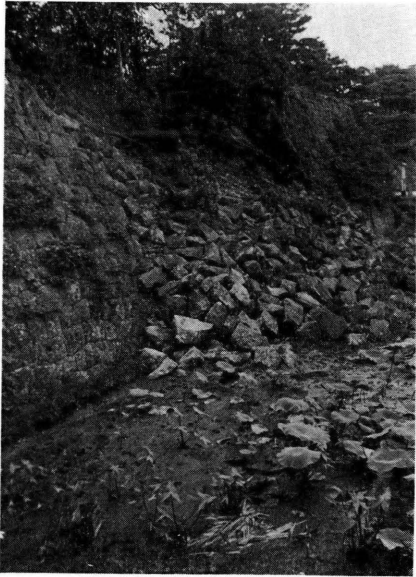


(東京の記象上で……1分の長さ約17釧, 御前崎のでは約50釧)

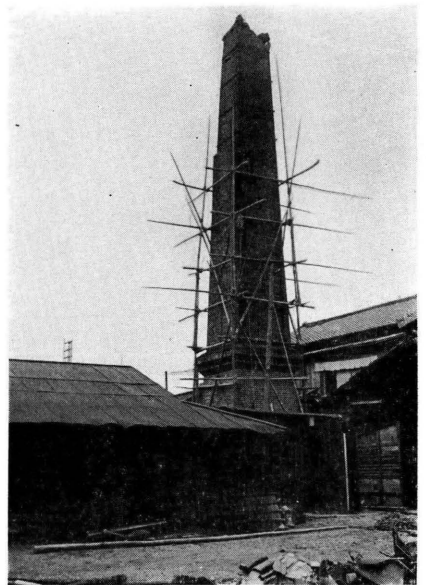
( 1 )



( 2 )

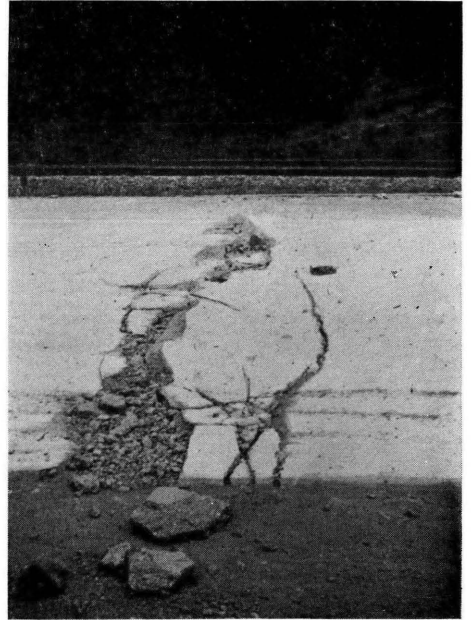


( 3 )



(1)静岡市，外濠の崩れ(根岸氏による飛行機上よりの撮影) (2)静岡縣廳前の濠端の崩れ  
(3)静岡市森下町，煙突の破損

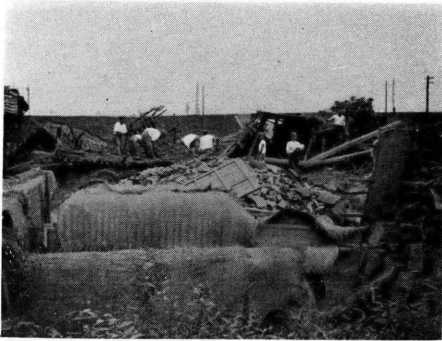
( 5 )



( 4 )



( 6 )



( 7 )



( 4 ) 静岡市森下町 ( 5 ) 柿木附近に於ける舗装道路の龜裂 ( 6 ) , ( 7 ) 古庄, 全潰せる人家

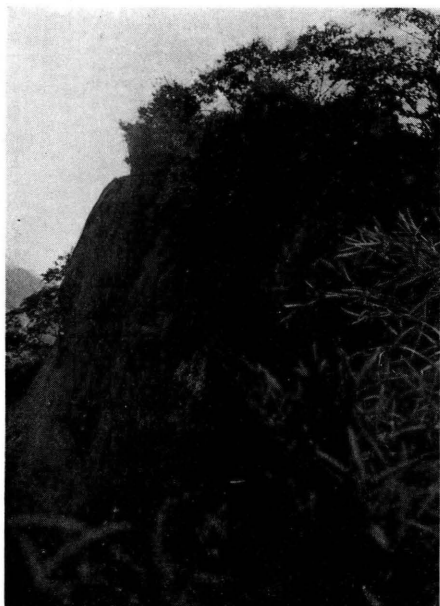
( 8 )



( 9 )



( 11 )



( 10 )



(8)静岡農学校寄宿舎屋根瓦の被害を示す (9)静岡縣廳正門棟瓦柱の破損 (10)草薙神社  
境内土藏壁の崩壊 (11)有度山南部の山崩れ

( 12 )



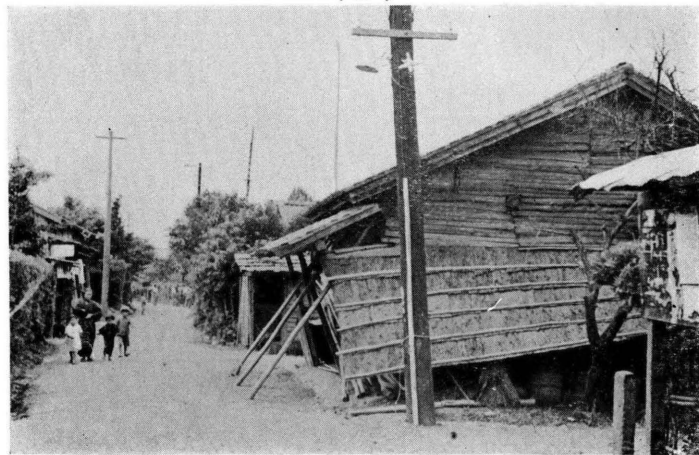
( 14 )



( 13 )

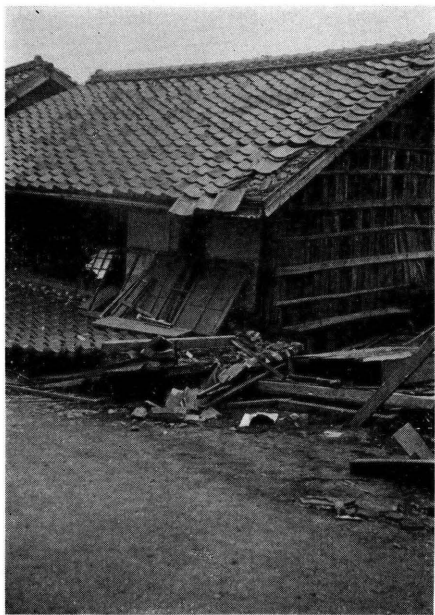


( 15 )



(12)池田本覺寺内の墓石轉倒(最多轉倒方向南東) (13)池田本覺寺拜殿前石燈籠の轉倒(方向北東) (14)池田, 東方に傾ける家屋 (15)池田, 東方に傾ける家屋

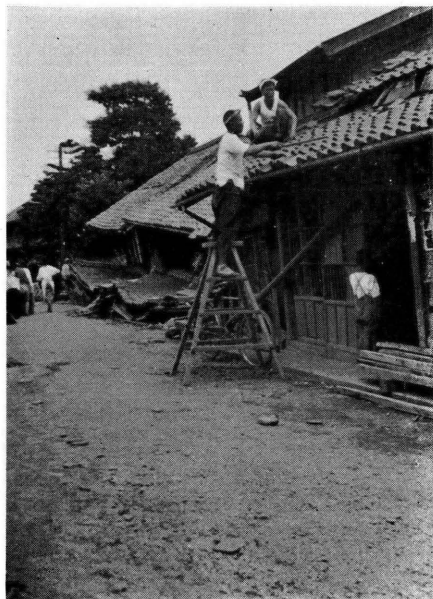
( 16 )



( 17 )



( 19 )

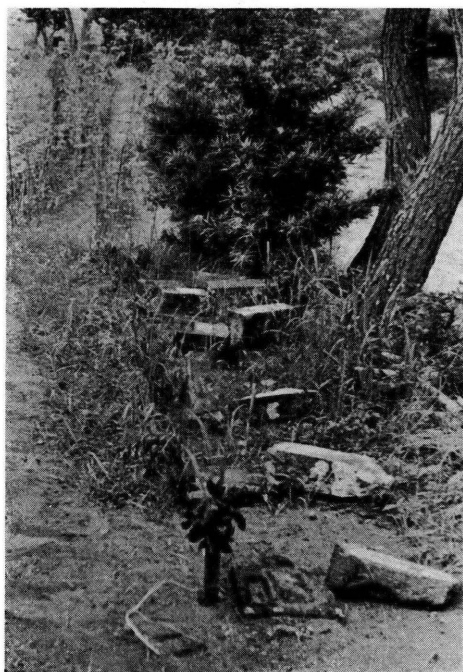


( 18 )



(16)大谷, 二階建家屋の倒壊 (17)高松, 二階建家屋の倒壊 (18)石部, 大崩海岸の崖崩れ  
(19)高松, 家屋の倒壊

( 20 )



( 21 )



( 22 )



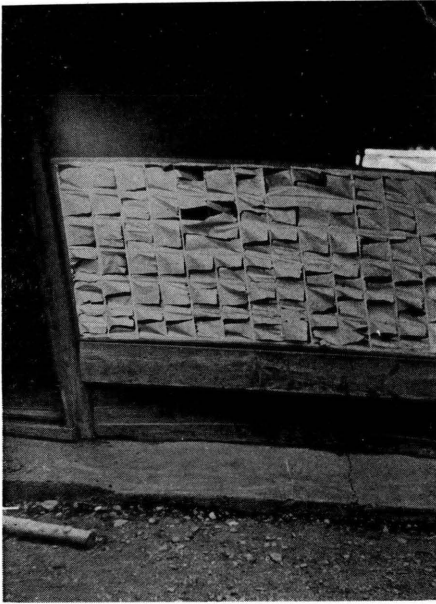
( 23 )



(20)西大谷，大谷川南岸の墓石轉倒(北方へ倒る) (21)東大谷，土藏の破損 (22)西大谷，大正寺内墓石轉倒(東徼北方へ倒る) (23)西大谷，地震後火災に罹りし家屋の慘狀



( 24 )



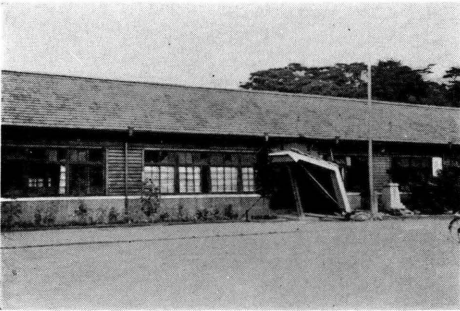
( 25 )



( 26 )



( 27 )



(24)大谷, 地震動により破れた障子 (25)西大谷, 家屋の被害 (26)東大谷, 土蔵の破損  
(27)大谷小學校の被害

( 28 )

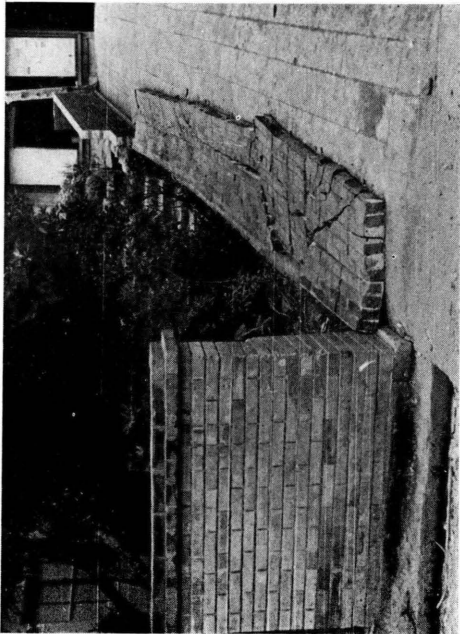


( 29 )

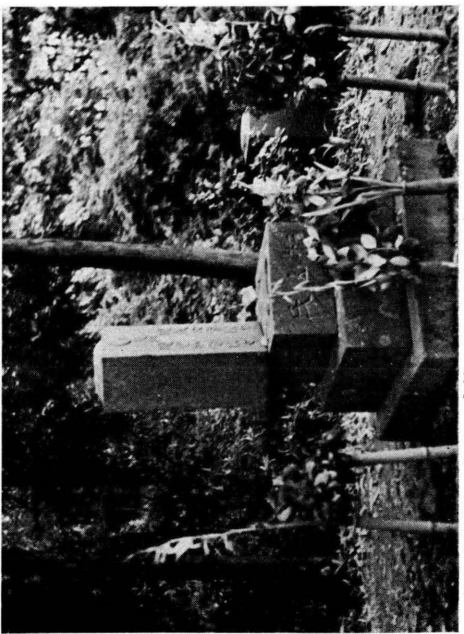


(28) 東大谷 (29) 西大谷, 所々に倒壊家屋が見える(何れも根岸氏による飛行機上よりの撮影)

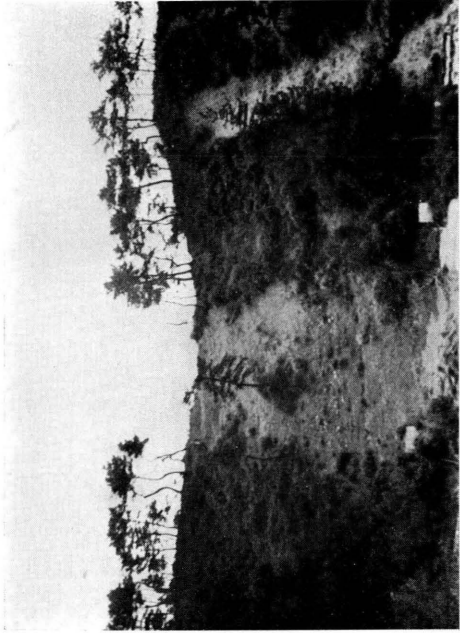
( 30 )



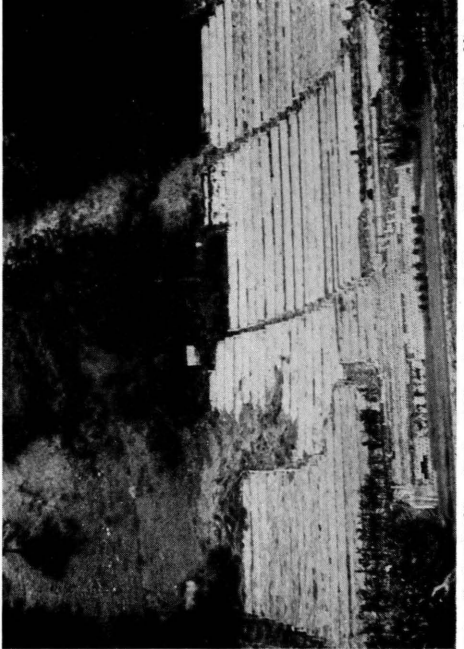
( 31 )



( 32 )

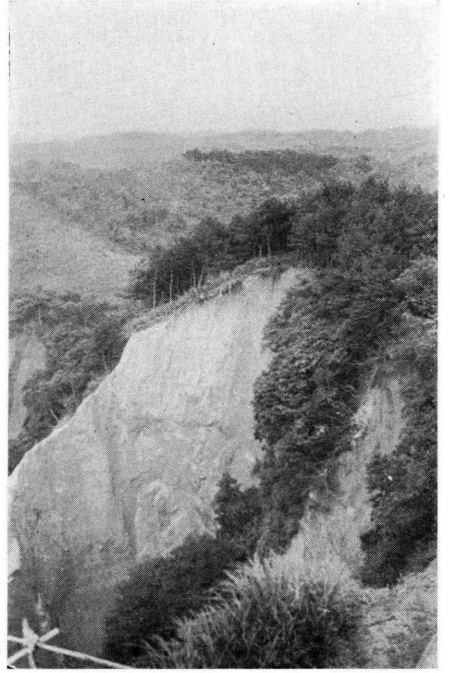


( 33 )

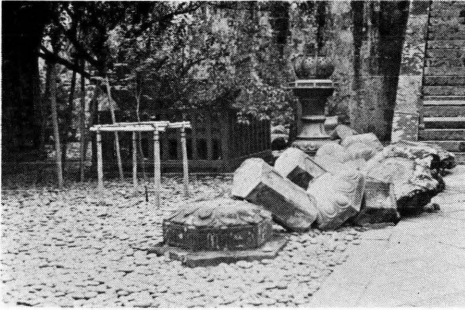


(30) 西平松に於ける赤城互振の御塚(東方へ) (31) 西平松に於ける墓石の移動及廻轉 (32)、(33) 西平松の山崩れ、(32)は下方(33)に續く

( 36 )



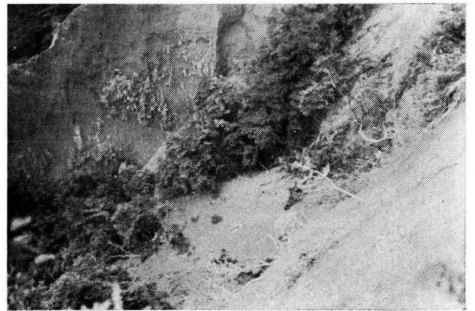
( 34 )



( 35 )



( 37 )

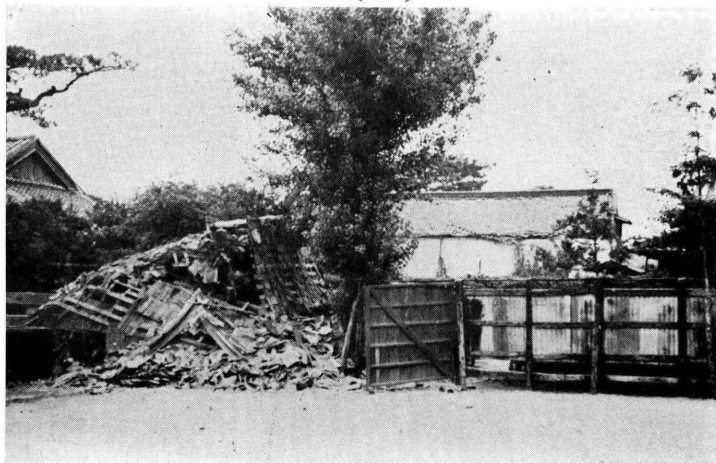


(34)久能山東照宮拜殿前(上段)石燈籠の轉倒 (35)久能山東照宮拜殿前(下段)石燈籠の轉倒  
(36)日本平の南西方の山崩れ (37)日本平の南西方の山崩れ

( 38 )



( 40 )



( 39 )



( 41 )



(38)清水港岸壁第2倉庫の破壊 (39)清水市新港岸壁倉庫の破壊，附近には倉庫の半壊せるものが相当にある  
 (40)清水市江淨寺鐘樓の倒壊 (41)清水市三保行汽船發着所附近の東北東へ傾いた家屋

( 42 )



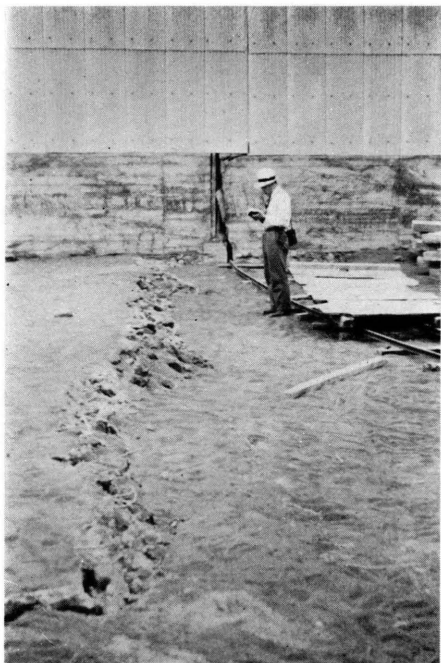
( 43 )



(42)清水港岸壁(巴川河口附近)の破損(根岸氏に依る飛行機上よりの撮影)

(43)清水港岸壁第1倉庫の破壊(上圖と同一個所)

( 44 )



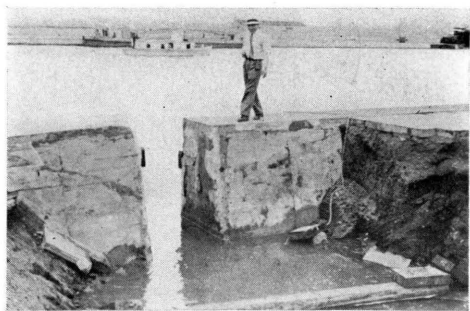
( 45 )



( 46 )



( 47 )



(44)清水港岸壁に沿ふ陥没の北部(正面は下圖倉庫の外側壁に相當す) (45)清水港倉庫内部の破損(本文第1圖參照) (46)清水港巴川河口岸の龜裂 (47)清水港岸壁に沿ふ陥没地帯の南端

# 縣圖國編農陸查報生口參考圖

參謀本部五分一地形圖

