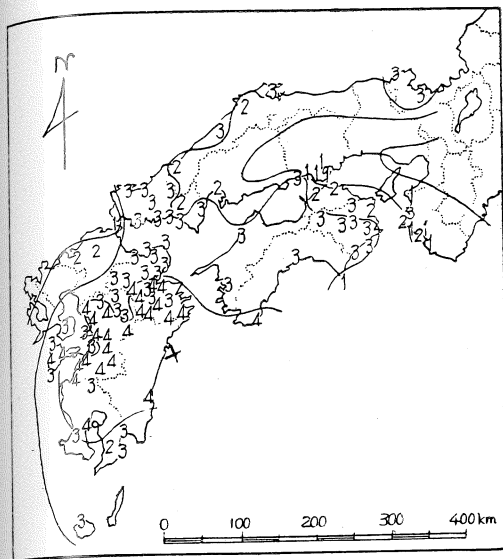


## 25. The Hyuga Sea Earthquake, 1939

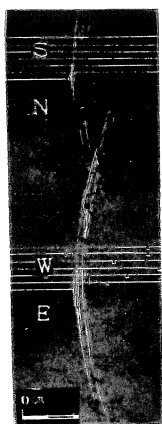
(March 20th, 12:22.  $32^{\circ}24'N$ ,  $131^{\circ}43'E$ ,  
 $r=318$  km,  $M=6.8$ )



Very strong motion was felt in Miyazaki and Oita Prefs. causing damage of 13 houses at Sahegi, 5 at Kamae, 10 at Tsukumi, 7 at Usuki, and some of shop goods in towns and villages such as Tsurusaki, Misa, Oita, Aikawa, Kamiogata, Takeda, Beppu suffered slight damage.

### Seismographs

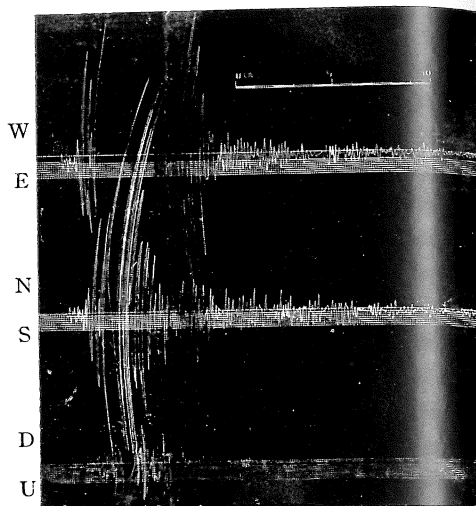
No Fig.	Station	Int.	Inst.	Comp.	V	T	r	v	ps	No m. f.
1,2	Kumamoto	IV	W	N	78	4.4	0.01	5	31.5	200
				E	78	4.4		4	31.7	204
				V	71	4.7		6		
3,4	Shimizu	IV	W	H	70				30.3	199
				V					33.0	
5	Kagoshima	IV	S						—	41
6	"		W	V	83	4.1	0.058	5	27.2	172
7	Miyazaki	IV	W	E	67	4.9	0.006	6.1		
				N	67	4.9	0.008	6.2	28.5	233
				V	52	4.7	0.003	5.0	31.5	209



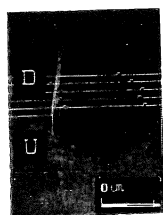
1. Kumamoto (WH)



3. Shimizu (WH)



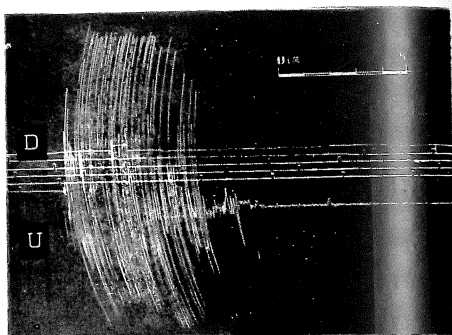
5. Kagoshima (S)



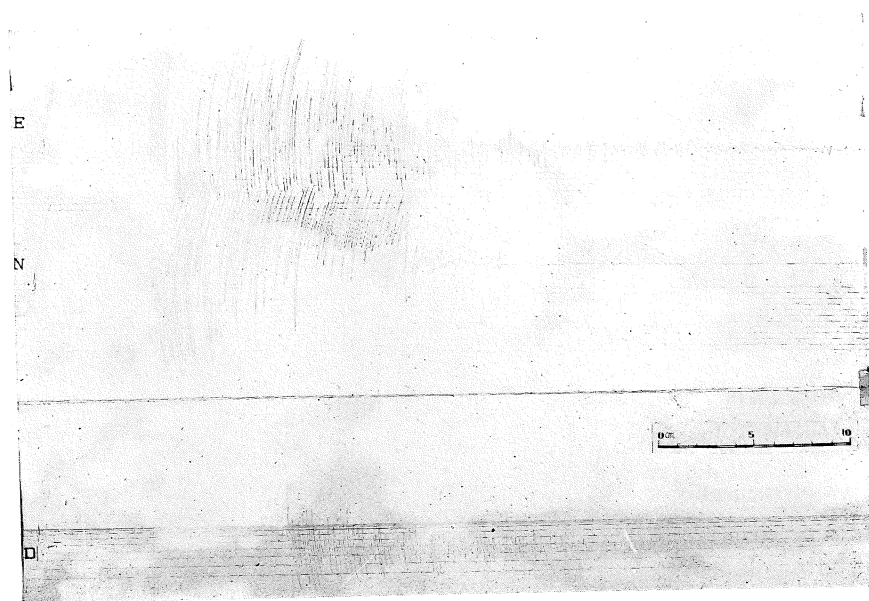
2. Kumamoto (WV)



4. Shimizu (WV)



6. Kagoshima (WV)



7. Miyazaki (W)