

# Report on the HimawariRequest Service

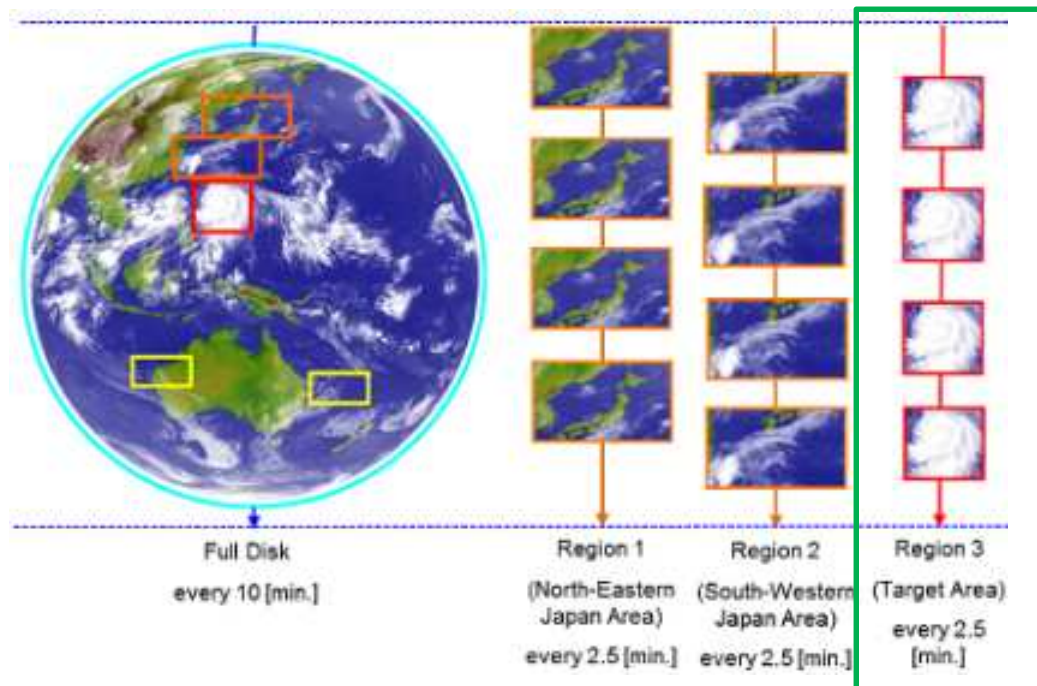
Japan Meteorological Agency

The Joint Meeting of RA II WIGOS Project and RA V TT-SU (Task Team on Satellite Utilization)  
for RA II and RA V NMHSs

Jakarta, Indonesia, 11 October 2018

# Launch of the Service

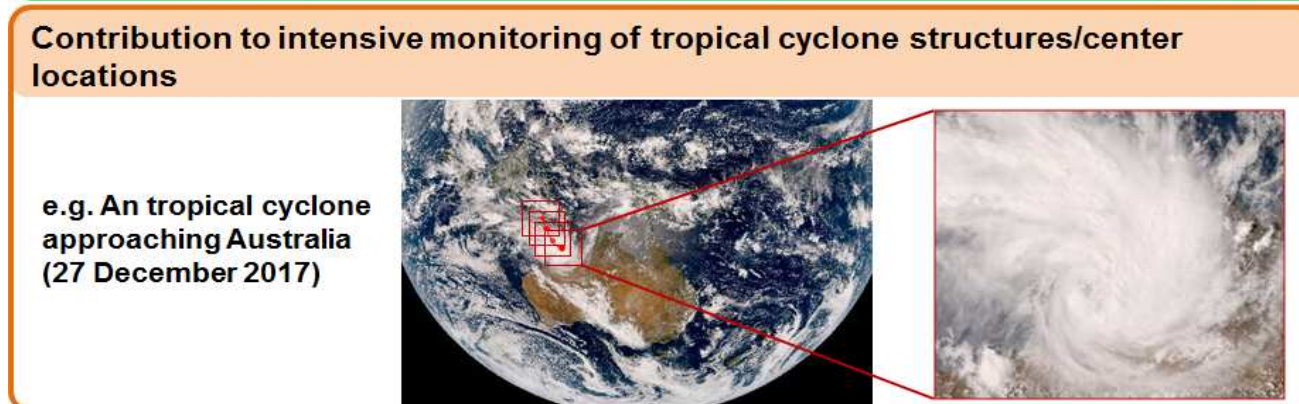
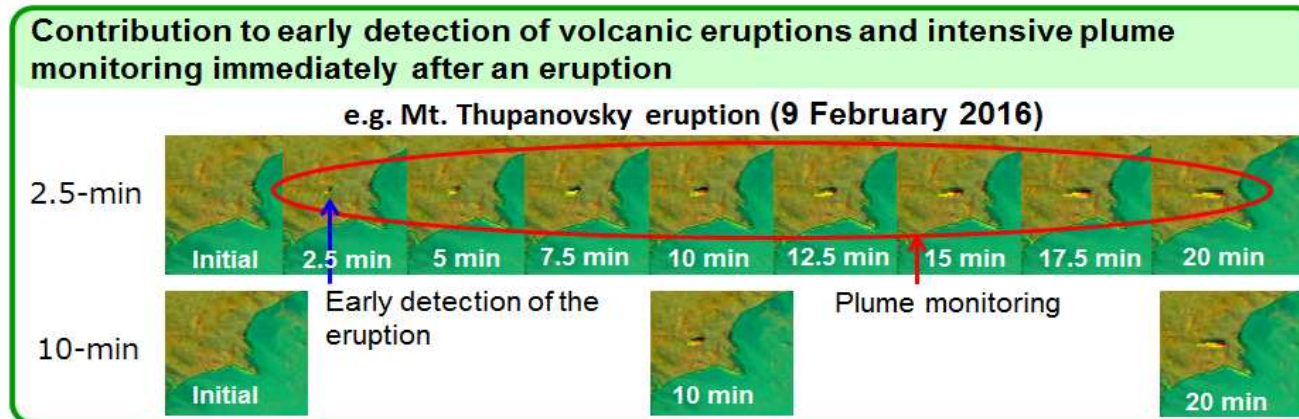
- In January 2018, JMA launched a new international service “HimawariRequest”, in collaboration with the Australian Bureau of Meteorology (AuBoM).
- The service allows NMHS users in WMO RA II and RA V to request Himawari-8/9 Target Area observation covering a 1000 km x 1000 km area every 2.5 minutes.



Users are able to request Target Area observation conducted every 2.5 min!

# Rapid Scan Benefit

- Target Area observation provides better insight for extreme events such as tropical cyclones or volcanic eruptions.
- JMA utilizes Target Area observation for its services, including typhoon monitoring within the responsibility area of the Regional Specialized Meteorological Center (RSMC) Tokyo - Typhoon Center.



# Request Webtool

- For easy and smooth request process, JMA prepared an webtool for HimawariRequest users.
- The webtool assists users to:
  - Select a center position
  - Specify start/end times
  - Create a request email
- The webtool is provided to each registered user.

Select Latitude ,Longitude , TIME, Event type & Purpose

Nation (Organization) : Malaysia (MetMalaysia)  
Name : XXXX

Event Type : Tropical Cyclone (Others : Others (to be specified))

Purpose : Disaster Risk Reduction (Others : Others (to be specified))

Observation area :  
N 17.8 E 117.0

START TIME : As soon as possible

Duration : 24 hours

HimawariRequest Form

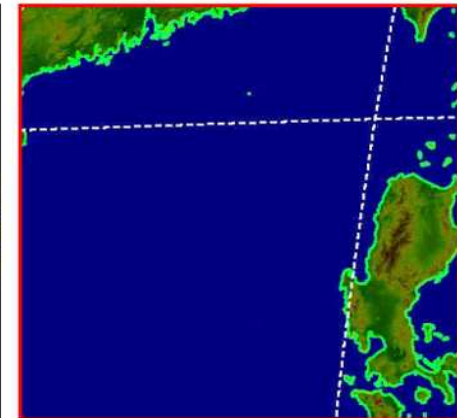
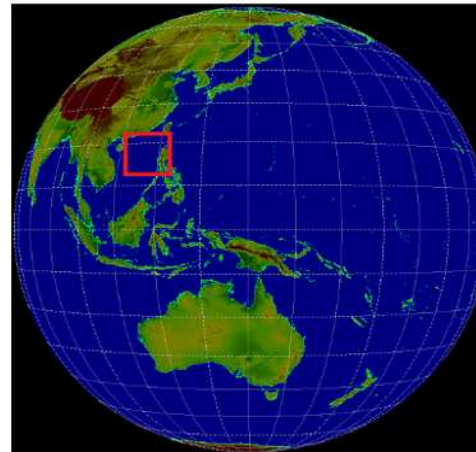
Nation (Organization) : Malaysia (MetMalaysia)  
Personal Name : XXXX

Event Type : Tropical Cyclone  
Purpose : Disaster Risk Reduction

Latitude & Longitude : (17.8,117.0)

Start Time [UTC] : As soon as possible  
End Time [UTC]:2018/09/29 09:00  
Duration : 24hours

Send HimawariRequest e-mail (to hima\_req@ml.kishou.go.jp)



# Visualization of Observation Availability

Schedule of Target Area observations available on the webtool

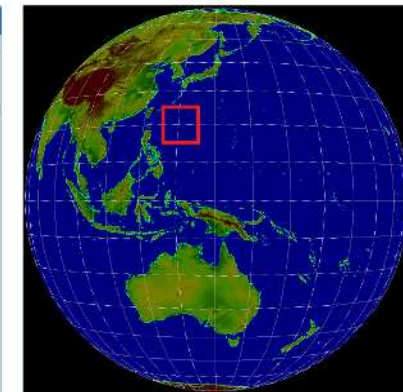
- Users are able to check whether their requests are to be accepted.

Example of Target Area observation schedule

2018/10/05	17:50	30.2	125.5	RSMC Tokyo - Typhoon Center
2018/10/05	18:00	30.2	125.5	RSMC Tokyo - Typhoon Center
2018/10/05	18:10	52	158	HimawariRequest Available
2018/10/05	18:20	52	158	HimawariRequest Available
2018/10/05	18:30	52	158	HimawariRequest Available
2018/10/05	18:40	52	158	HimawariRequest Available
2018/10/05	18:50	52	158	HimawariRequest Available
2018/10/05	19:00	52	158	HimawariRequest Available
2018/10/05	19:10	52	158	HimawariRequest Available
2018/10/05	19:20	52	158	HimawariRequest Available

Observation Schedule of Himawari-8/9

Target Area Observation [2018/10/02 21:40 UTC]				
2018/10/05	16:20	29.9	125.5	RSMC Tokyo - Typhoon Center
2018/10/05	16:30	29.9	125.5	RSMC Tokyo - Typhoon Center
2018/10/05	16:40	29.9	125.5	RSMC Tokyo - Typhoon Center
2018/10/05	16:50	30	125.5	RSMC Tokyo - Typhoon Center
2018/10/05	17:00	30	125.5	RSMC Tokyo - Typhoon Center
2018/10/05	17:10	30	125.5	RSMC Tokyo - Typhoon Center
2018/10/05	17:20	30.1	125.5	RSMC Tokyo - Typhoon Center
2018/10/05	17:30	30.1	125.5	RSMC Tokyo - Typhoon Center
2018/10/05	17:40	30.1	125.5	RSMC Tokyo - Typhoon Center
2018/10/05	17:50	30.2	125.5	RSMC Tokyo - Typhoon Center
2018/10/05	18:00	30.2	125.5	RSMC Tokyo - Typhoon Center
2018/10/05	18:10	52	158	HimawariRequest Available
2018/10/05	18:20	52	158	HimawariRequest Available
2018/10/05	18:30	52	158	HimawariRequest Available
2018/10/05	18:40	52	158	HimawariRequest Available
2018/10/05	18:50	52	158	HimawariRequest Available
2018/10/05	19:00	52	158	HimawariRequest Available
2018/10/05	19:10	52	158	HimawariRequest Available
2018/10/05	19:20	52	158	HimawariRequest Available



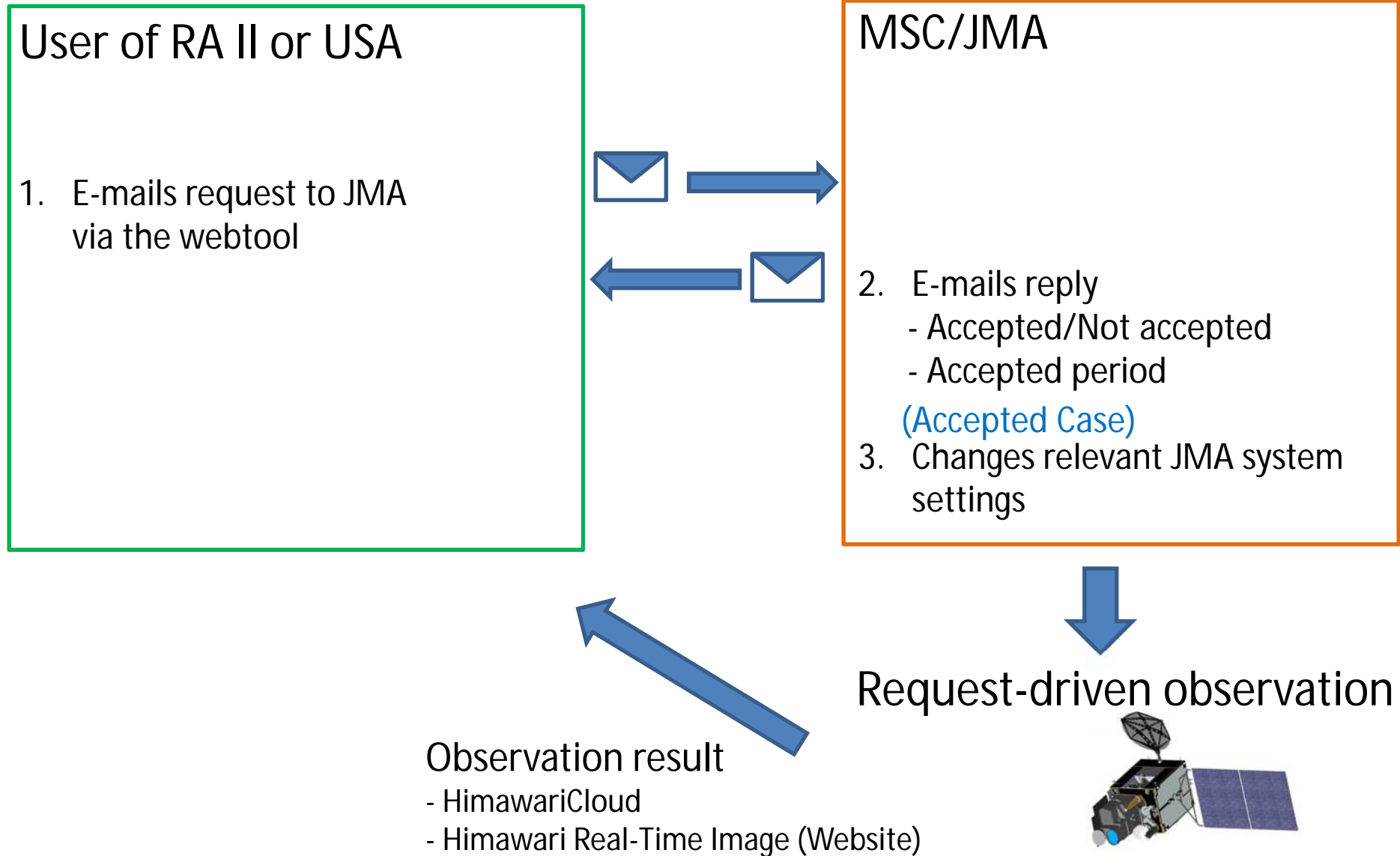
RSMC Tokyo - Typhoon Center(19.9,130)

2018/10/02 21:40 UTC

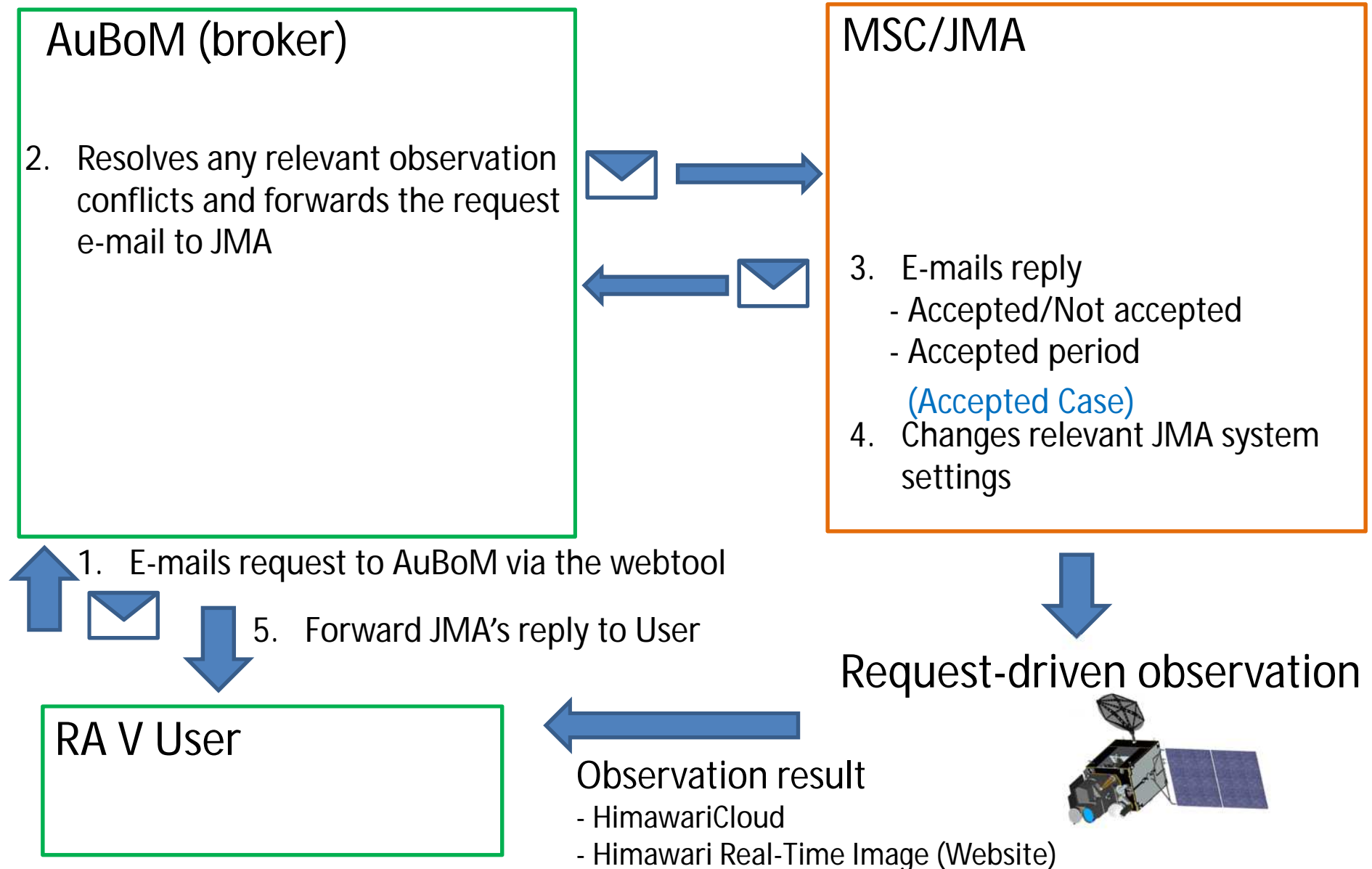
Start Stop

These time slots are expected to accept user's request!

# Procedure for RA II



# Procedure for RA V



# Current Status (As of September 2018)

## 12 Registrations

the Solomon Islands, Myanmar, Australia, Hong Kong, Bangladesh, New Zealand, Malaysia, Samoa, Nepal, Thailand, Fiji and Russia

## 9 Users (preparations for request submission were complete)

the Solomon Islands, Hong Kong, New Zealand, Nepal, Australia, Malaysia, Fiji, Thailand and Russia

JMA expects the HimawariRequest service to support disaster risk reduction activities in the Asia Oceania region.

Further information on HimawariRequest including its service description and registration form is available at JMA's webpage:

<http://www.jma.go.jp/jma/jma-eng/satellite/HimawariRequest.html>

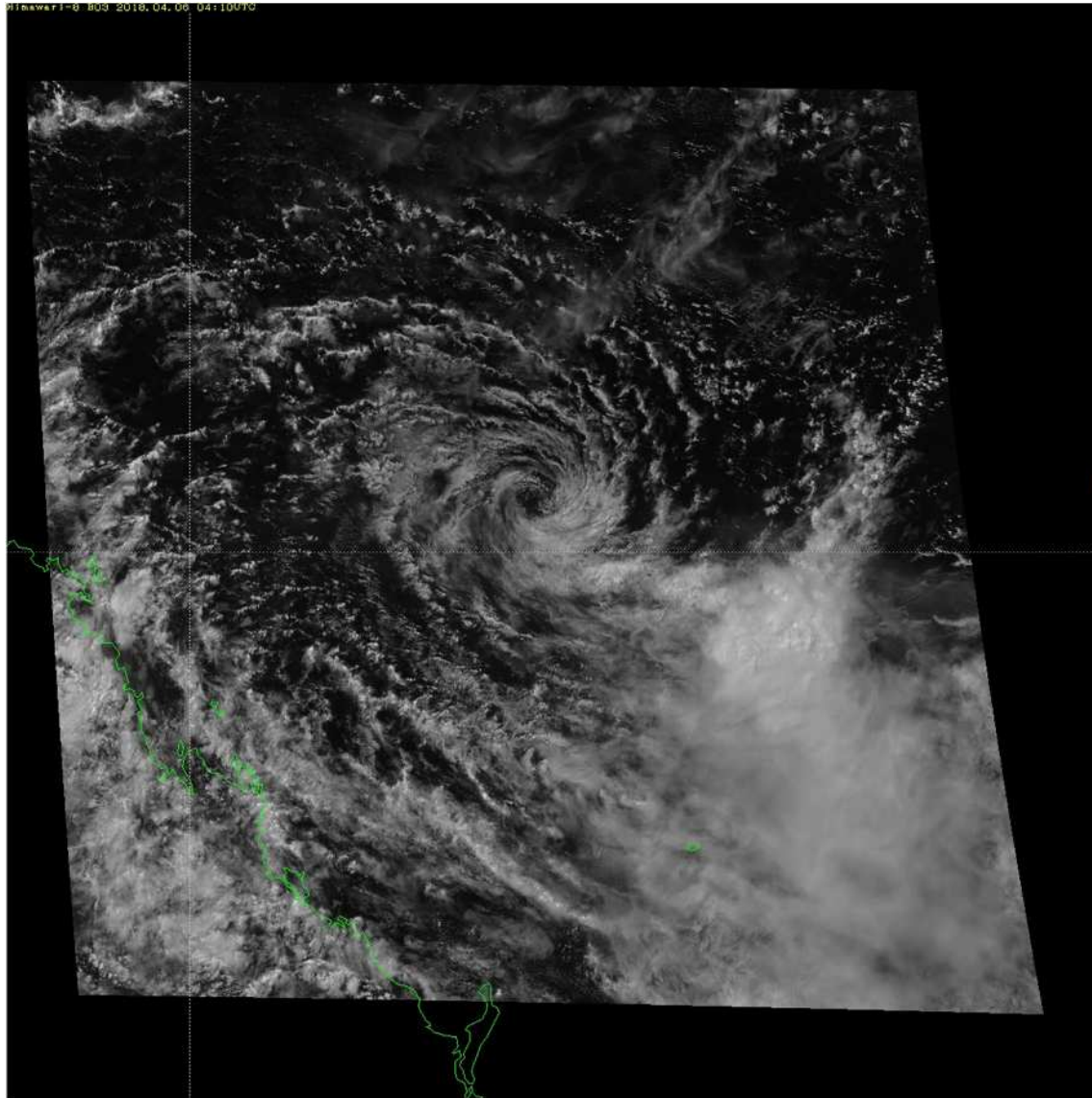


# CGMS Recommendation

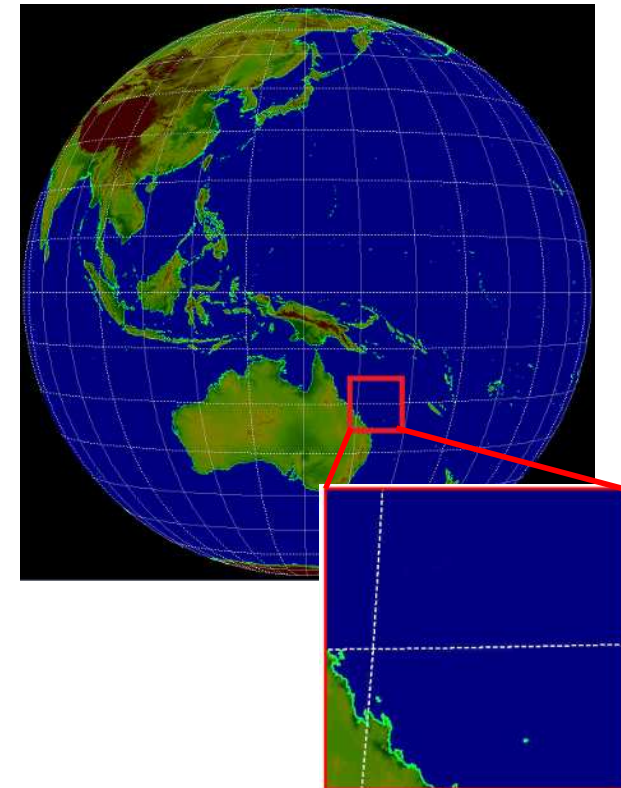
CGMS-46 Plenary Recommendation 46.12 (June 2018):

“On RAI WIGOS project : CMA, JMA, KMA to jointly build a portal in the Project website for their operational information regarding rapid-scanning observations on demand from geostationary meteorological satellites in the regions. “

# Test Observation with AuBOM



April 6<sup>th</sup>, 2018  
04:00UTC - 05:00UTC  
Tropical Storm IRIS





Thank you!