

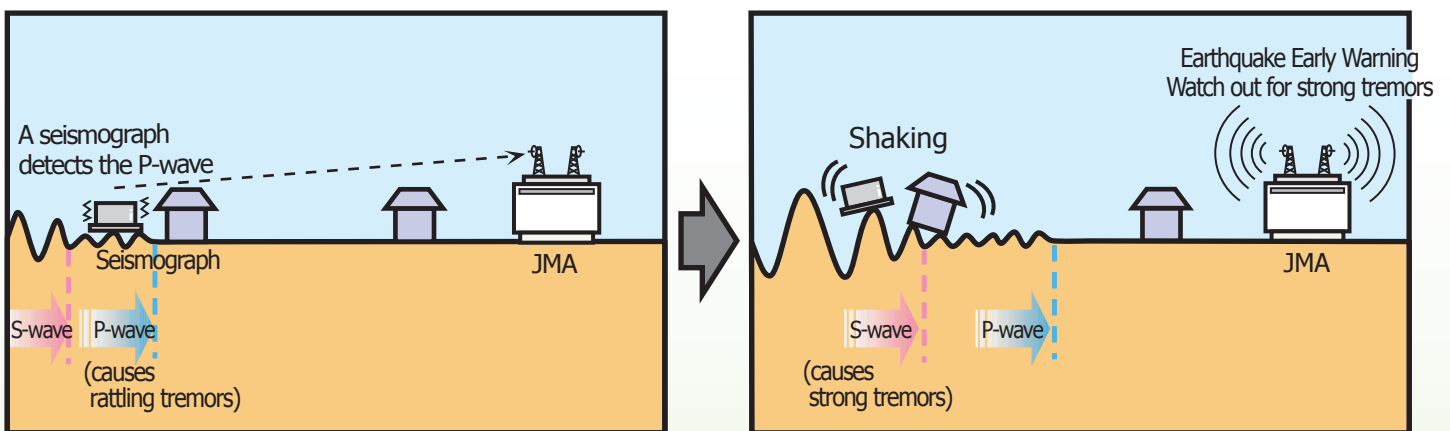
Earthquake Early Warning

or “緊急地震速報 (Kinkyu Jishin Sokuho)” in Japanese

— A New Advance Earthquake Alert —

Starting 1 October 2007

As of 1 October 2007, the Japan Meteorological Agency (JMA) will start the Earthquake Early Warning, a new service that advises of strong tremors before they arrive.



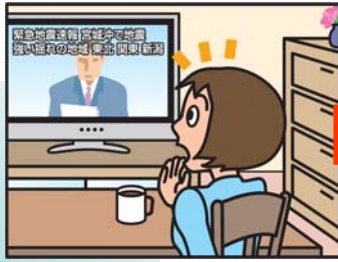
- The Earthquake Early Warning system automatically calculates the focus and magnitude of the earthquake and estimates the seismic intensity for each location by detecting the quake (i.e. the P-wave, or the preliminary tremor) near its focus. An Earthquake Early Warning is then given a matter of seconds (i.e. a few seconds to a few tens of seconds) before the arrival of strong tremors (i.e. the S-wave, or principal motion).
- Earthquake Early Warnings will be provided through various media outlets such as TV and radio.
- Please note that strong tremors may arrive at the same time as the Earthquake Early Warning in areas that are close to the focus of the earthquake.

2007

Japan Meteorological Agency
Ministry of Land, Infrastructure and Transport

At Home

- Protect your head and shelter under a table
- Don't rush outside
- Don't worry about turning off the gas in the kitchen



In Public Buildings

- Follow the attendant's instructions
- Remain calm
- Don't rush to the exit



Earthquake Early Warning: Dos & Don'ts

When Driving

- Don't slow down suddenly
- Turn on your hazard lights to alert other drivers, then slow down smoothly
- If you are still moving when you feel the earthquake, pull safely over to the left and stop



Remain calm, and secure your personal safety based on your surroundings!

After seeing or hearing an Earthquake Early Warning, you have only a matter of seconds before strong tremors arrive. This means you need to act quickly to protect yourself.

Outdoors



- Look out for collapsing concrete-block walls
- Be careful of falling signs and broken glass
- Take shelter in a sturdy building if there is one close enough

On Buses or Trains

Hold on tight to a strap or a handrail



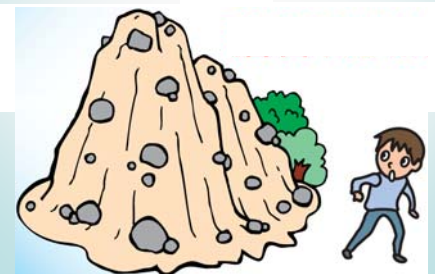
In Elevators

Stop the elevator at the nearest floor and get off immediately



Near Mountains/Cliffs

Watch out for rockfalls and landslides



For more information about the Earthquake Early Warning system, please contact the following department or visit the agency's website.
Administration Division, Seismological and Volcanological Department
Japan Meteorological Agency

Address: 1-3-4 Otemachi, Chiyoda-ku, Tokyo 100-8122

Phone: 03-3212-8341

Website: <http://www.jma.go.jp/jma/indexe.html>



The Earthquake Early Warning system has been made possible through joint technological development by the Japan Meteorological Agency and the Railway Technical Research Institute, as well as through achievements in technological development by the National Research Institute for Earth Science and Disaster Prevention.